

FOUNTAINHEAD OFFICE PARK OFFICE SPACE FOR LEASE

10700 E. Bethany Drive, Aurora CO 80014



Available: 854 - 1,261/RSF
Base Rent: \$13.50/RSF Full Service
Parking: 2.5/1,000

- 2 story building with direct access on both floors
- Full service and competitive rates
- Ample parking on three sides of the building
- Close proximity to Nine Mile RTD light rail station
Kennedy Gold Course, Cherry Creek State Park,
Starbucks, Tiffany Plaza, 24 Hour Fitness, Whole Foods
and many restaurants and shopping options.



OFFICE SPACE FOR LEASE



SHELDON • GOLD REALTY INC.
commercial real estate services

Mary Jo Cummings
720.220.6000

9025 East Kenyon Avenue, Suite 100 Denver, CO 80237
mcummings@sg-realty.com www.sg-realty.com

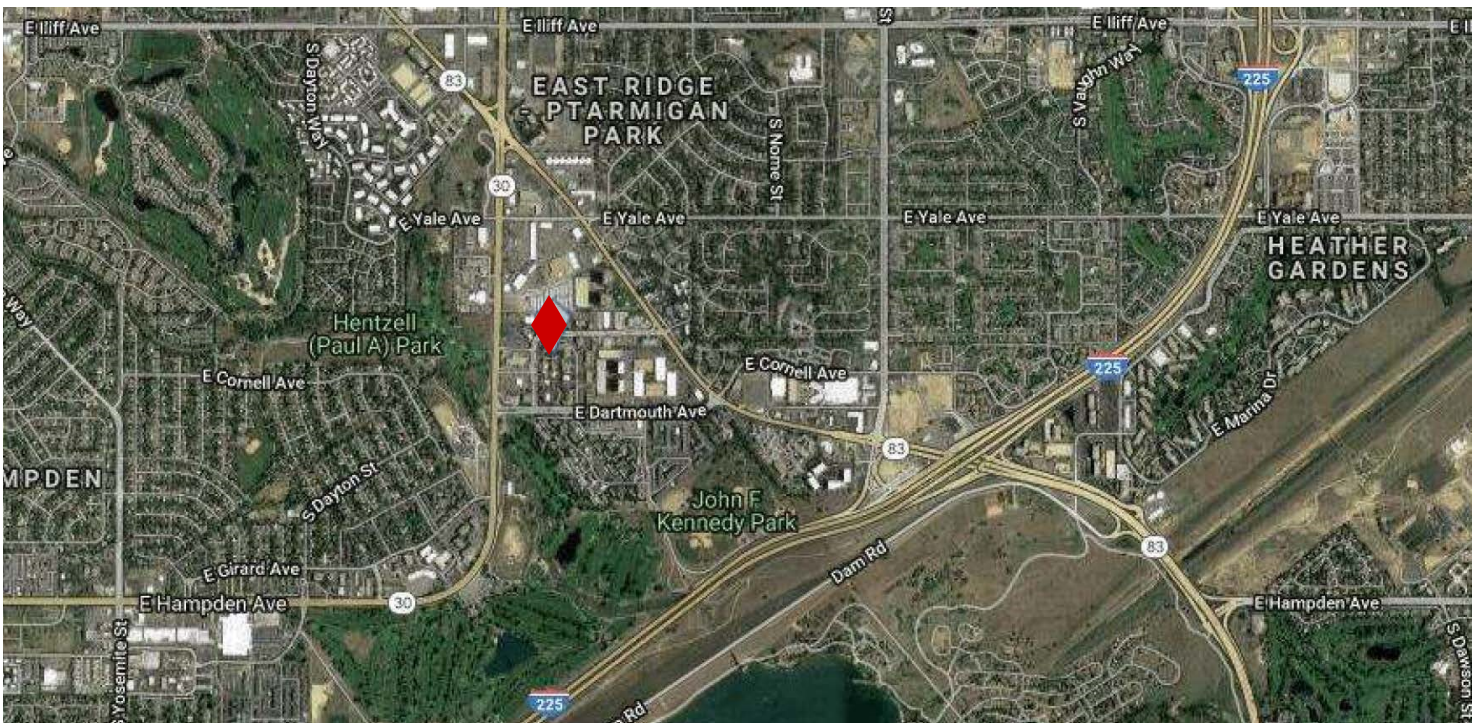
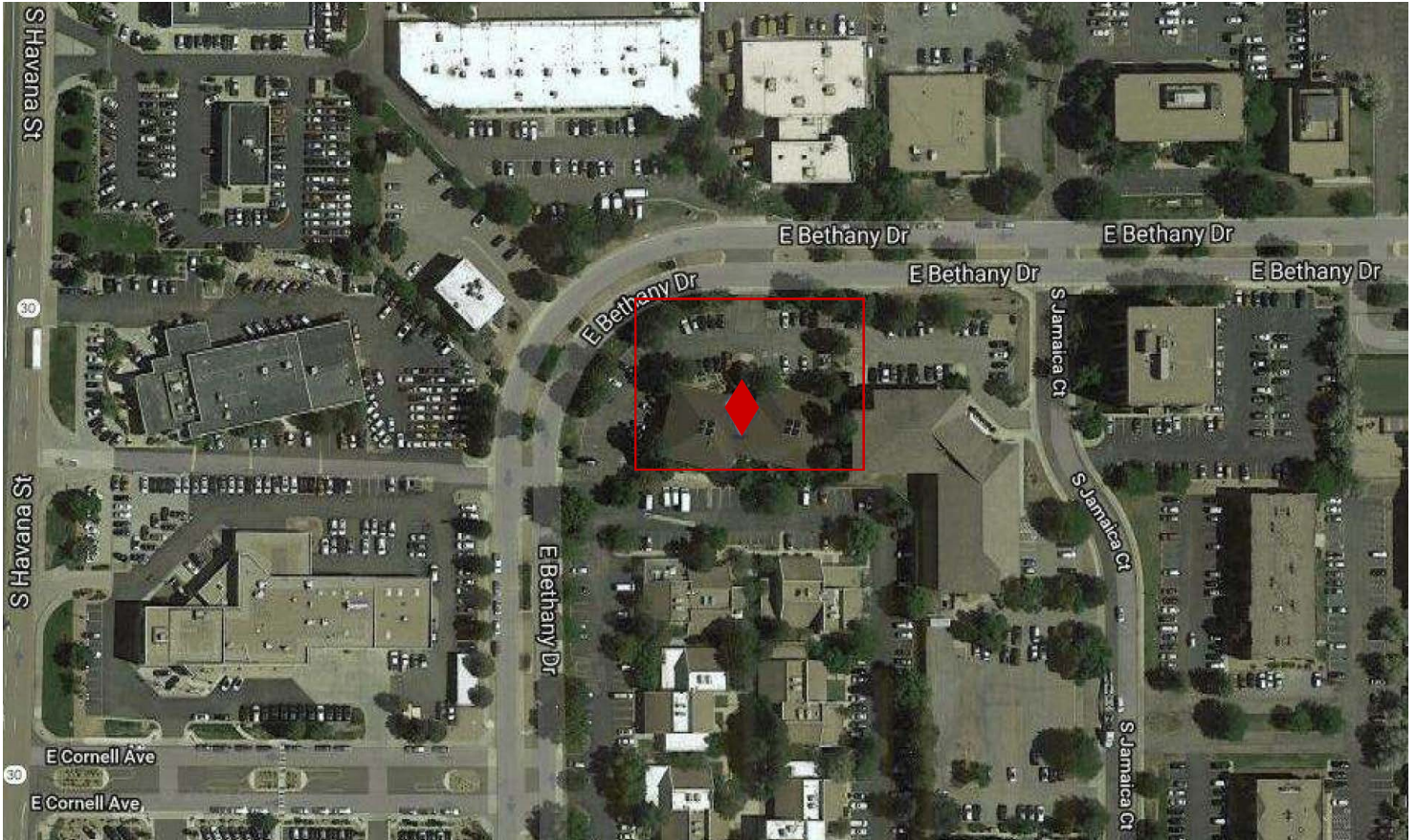


THE INFORMATION CONTAINED HEREIN, WHILE NOT GUARANTEED, IS FROM SOURCES WE BELIEVE RELIABLE. PRICE, TERMS AND INFORMATION ARE SUBJECT TO CHANGE. SHELDON-GOLD REALTY INC. AND ITS BROKER ASSOCIATES, ARE OR WILL BE ACTING AS AGENTS OF THE SELLER/LESSOR WITH THE DUTY TO REPRESENT THE INTERESTS OF THE SELLER/LESSOR. SHELDON-GOLD REALTY INC. WILL NOT ACT AS YOUR AGENT UNLESS AN AGENCY AGREEMENT IS SIGNED AND IN EFFECT.

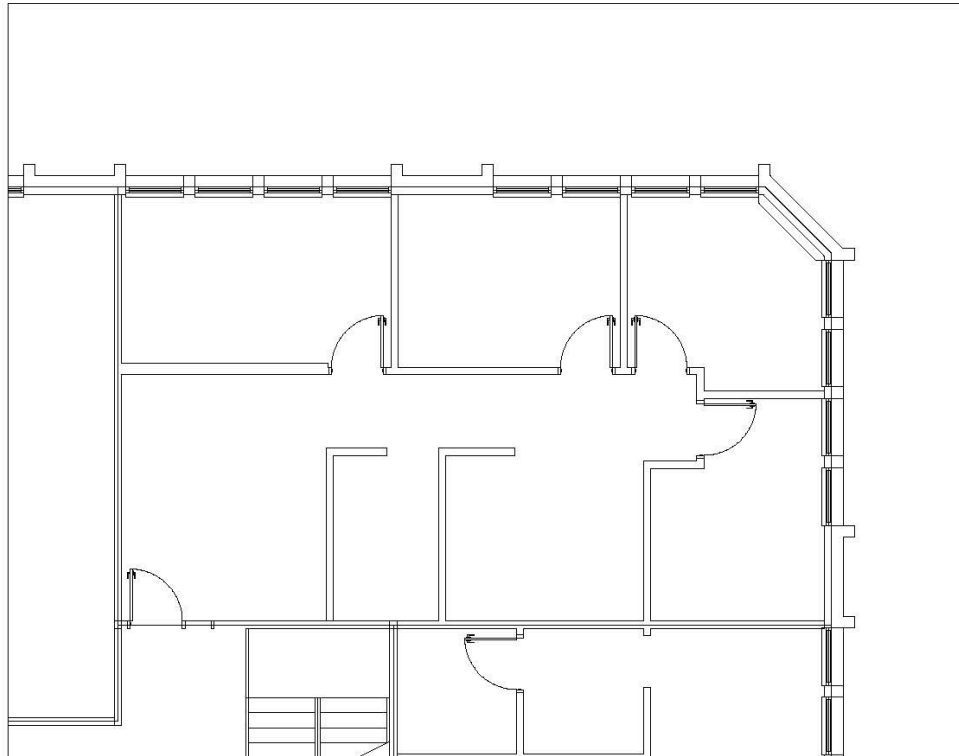
FOUNTAINHEAD OFFICE PARK

OFFICE SPACE FOR LEASE

10700 E. Bethany Dr., Aurora CO 80014



FOUNTAINHEAD OFFICE PARK
OFFICE SPACE FOR LEASE
10700 E. Bethany Dr., Aurora CO 80014



UNIT 104 - 1,261 SF RENTABLE

1:120

SCALE: PER PLAN
DATE: 06DEC16
PROJECT:
2016-BETHANY

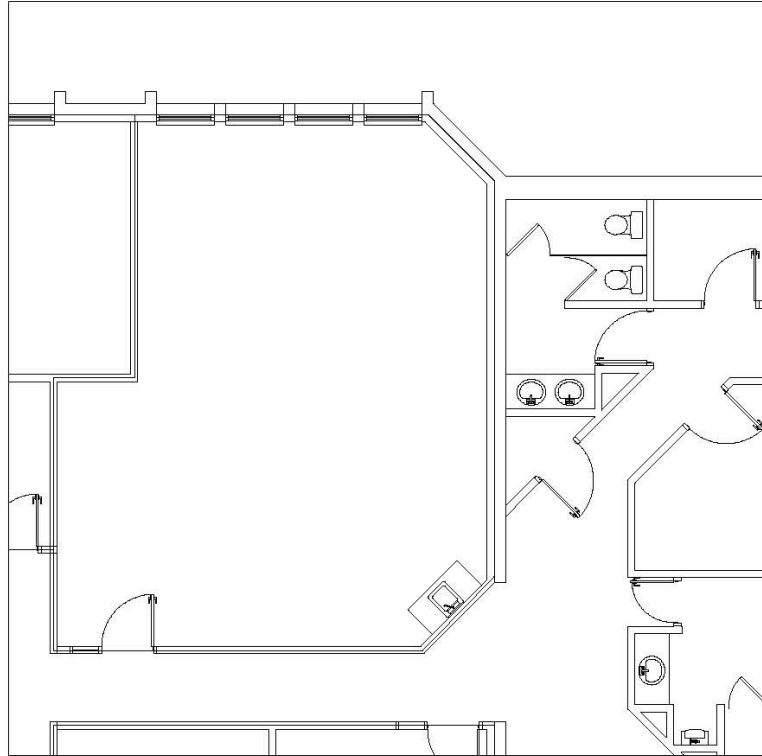
10700 E BETHANY DR



C. PELL, ARCHITECT, LLC

cpell_arch@yahoo.com
6354 S. BLACKHAWK WAY, 303-718-1343

FOUNTAINHEAD OFFICE PARK
OFFICE SPACE FOR LEASE
10700 E. Bethany Dr., Aurora CO 80014



UNIT 110 - 854 SF RENTABLE

1:120

SCALE: PER PLAN
DATE: 06DEC16
PROJECT:
2016-BETHANY

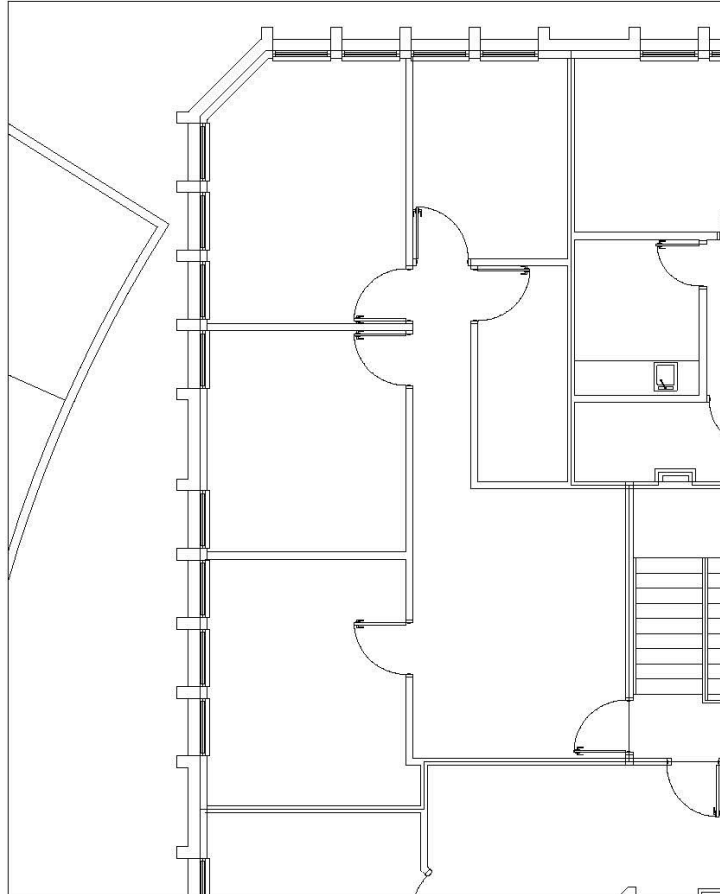
10700 E BETHANY DR



C. PELL, ARCHITECT, LLC

cpell_arch@yahoo.com
6354 S. BLACKHAWK WAY, 303-718-1343

FOUNTAINHEAD OFFICE PARK
OFFICE SPACE FOR LEASE
10700 E. Bethany Dr., Aurora CO 80014



UNIT 209 - 1,173 SF RENTABLE

1:120

SCALE: PER PLAN
DATE: 06DEC16
PROJECT:
2016-BETHANY

10700 E BETHANY DR



C. PELL, ARCHITECT, LLC
cpell_arch@yahoo.com
6354 S. BLACKHAWK WAY, 303-718-1343